

RcJoyCon USB-3CH EX User Guide

1. Feature of RcJoyCon USB-3CH EX

- Converts RC transmitter into joystick, keyboard, mouse by hardware.
- You can play all PC games with RC controller.
- Max resolution over 2000 for three channels.
- Supports proportional steering wheel, throttle/break trigger in games.
- Easy motion range set-up for full range of steering wheel/trigger. (The motion range can be tuned precisely with clipping)
- Shift up and down gears by Double Trigger and Back Trigger in racing games. (Buttons can be released automatically with Auto Release.)
- Supports EXP for all 3 channel
- Graphical configuration with JoyCon Explorer.
- No external power or driver installation needs. (JoyCon Explorer is a program that supports precise configuration.)
- Supports all RC receiver(include HRS).
- Online firmware update
- Available OS : Windows 7, Vista, XP, 2000, 2003, 98, ME (JoyCon Explorer supports Windows XP and the later version.)

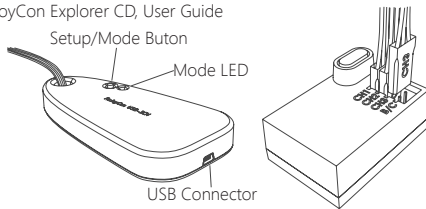
2. Contents

RcJoyCon USB-3CH EX, USB cable, JoyCon Explorer CD, User Guide

3. Installation

① Connect RC receiver as illustrated.

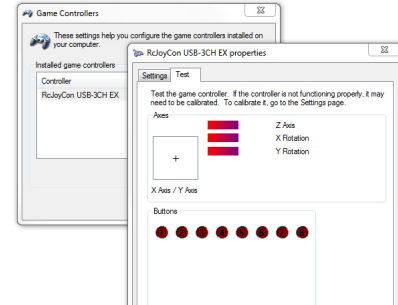
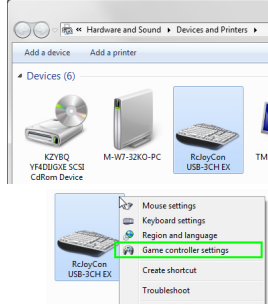
1CH(St)	White cable
2CH(Th)	Yellow cable
3CH	Orange cable



② Connect RcJoyCon to PC with USB cable included.

If first connection, wait for Windows to finish setup automatically.

③ You can find "RcJoyCon USB-3CH EX" in Devices and Printers.



!Warning!

Do not calibrate in the Settings tab of the Properties dialog box. Use the Motion Range Setup of RcJoyCon itself(3-⑤)

⑤ Motion range setup is needed when RC receiver is connected to RcJoyCon for the first time or when RC Controller's trim setting is changed.



Motion range set-up also can be done by RcJoyCon's button

Press Setup/Mode button for about 5 seconds, Mode LED will blink in blue and red in turn.

Move the handle and trigger of controller to the full range and press 3CH button several times.

Press Setup/Mode button again

You can use the full range of motion.

⑥ Mode is changed by pressing Setup/Mode button.

Blue LED	Normal		Use all function.
LED Off	off		Use no signal. This mode prevents noise when RC controller is turned off.
Blue LED Blink	Axis Only		Axis and button signal is separated. This mode is useful in controller setting of games.
Red LED Blink	Button Only		

⑦ Refer to the game user guide for controller setup.

4. Configuration using JoyCon Explorer

Movement of RC transmitter is displayed in JoyCon Explorer.

Drag the icon that you want to use and drop it on the icon of joystick, keyboard or mouse. Then the function of RC transmitter is connected to joystick, keyboard, mouse.

You can check connection with the lines when the mouse cursor stays over the icon.

Current RcJoyCon is displayed

Motion range setup

Change mode

In the image tab, you can set image for each preset by drag and drop.

You can delete connection by right-clicking the icon.

You can download preset to RcJoyCon or edit it by drag and drop.

Motion range: Motion range for each channel

Button Threshold: Steering wheel or Trigger works as a button when it goes below this value.

Auto Release Delay: Button is released after this time. Set 0 when not use.

Double Trigger Threshold: Trigger works as Double Trigger when it passes this value.

Double Trigger Interval: Twice-triggering within this interval makes the trigger recognized as Double Trigger.

Click "Apply" after changing values

RcJoyCon USB-3CH EX supports EXP for three channels.

Check here to use EXP

Transform EXP curve by dragging this

Check here to use EXP

Motion range can be turned precisely by clipping the edge of channel. And the center can be tuned precisely with Center Offset.

Click "Apply" after changing clipping value.

Mouse Wheel DeadZone: Proportional input is ignored in this zone when used as mouse wheel.

Mouse Wheel Delay: Button works as mouse wheel rotation when pressed more than this time.

Click "Apply" after changing mouse option

Mouse XY DeadZone: Proportional input is ignored in this zone when used as mouse input.

Mouse Velocity: Set the speed of mouse movement proportionally.

5. Factory Reset

Connect USB while the Setup/Mode Button is pressed.

