

RcJoyCon PS2-3CH User Guide

1. Characteristics of RcJoyCon PS2-3CH

- ① Supports all PS2 games.
- ② Supports proportional handle/throttle/break in PS2 games.
- ③ Full range of handle/trigger is possible by simple motion range setup.
(The motion range can be calibrated precisely with clipping)
- ④ You can shift up and down gears by Double Trigger and Back Trigger in racing games.
(Buttons can be released automatically with Auto Release.)
- ⑤ 10 game settings can be memorized.
- ⑥ You can set CH1 detecting existence of RC Controller.
- ⑦ CH1,2,3 can be configured easily with JoyCon Explorer by connecting USB of PC.
(JoyCon Explorer is a program that supports precise configuration.)
- ⑧ Supports all RC receiver(except HRS).

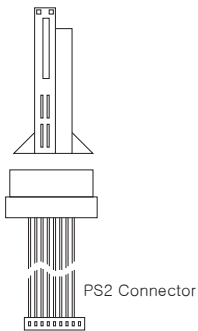
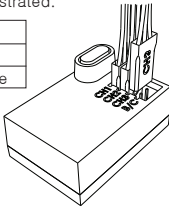
2. Contents

RcJoyCon PS2-3CH, PS2 cable, DualShock cable, RC receiver cable, USB cable, JoyCon Explorer CD, User Guide

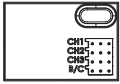
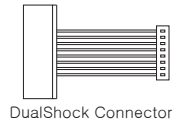
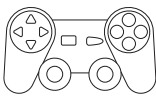
3. Installation

- ① Connect RC receiver as illustrated.

1CH (St)	White cable
2CH (Th)	Yellow cable
3CH	Orange cable

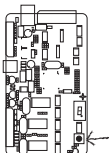


- ② Connect DualShock2 and RC receiver to RcJoyCon PS2-3CH with cables included. And connect RcJoyCon PS2-3CH to PS2.

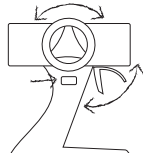


Setup/Mode Button

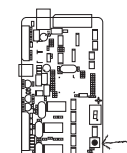
- ③ Motion range setup is needed when RC receiver is connected to RcJoyCon for the first time or when RC Controller's motion setting is changed.



Press Setup/Mode button for about 5 seconds. Mode LED will blink in blue and red in turn.

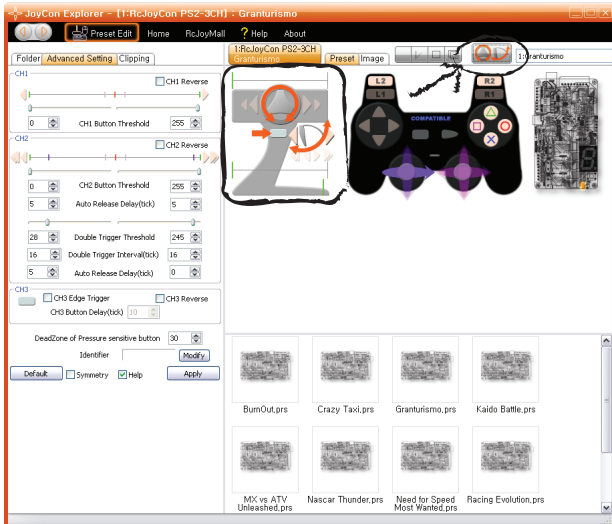


Move the handle and trigger of controller to the full range and press 3CH button several times.



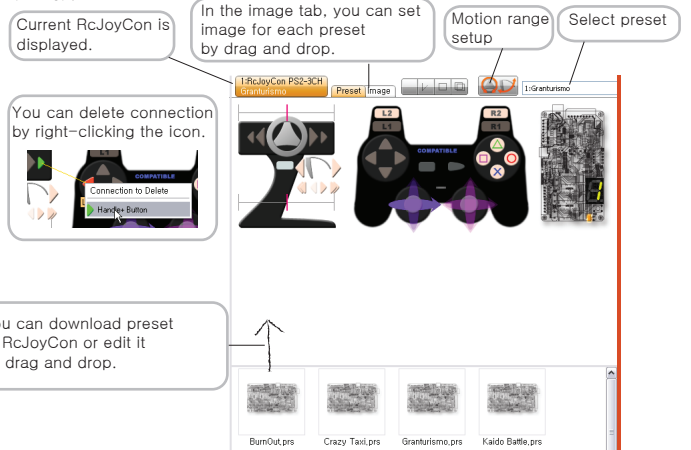
Press Setup/Mode button again

*Easy motion range setup is possible with JoyCon Explorer by connecting RcJoyCon PS2-3CH to PC's USB.



4. Configuration using JoyCon Explorer

Connect RcJoyCon to PS's USB with USB cable included. Movement of RC controller is displayed in JoyCon Explorer. Drag the icon whose function you want to use and drop it on the icon of joystick, keyboard or mouse. Then function of RC Controller is connected to joystick, keyboard, mouse. You can check connection with the displayed lines when the mouse cursor stays over the icon.



You can download preset to RcJoyCon or edit it by drag and drop.



Button Threshold:

Handle or Trigger works as a button when it goes below this value.

CH2 Double Trigger Threshold:

Trigger works as Double Trigger when it passes this value.

Double Trigger Interval:

Twice-triggering within this interval makes the trigger recognized as Double Trigger.

Auto Release Delay:

Button is released after this time. Set 0 when not use.

CH3 Edge Trigger:

CH3 Button works during CH3 Button Delay.

CH3 Button Delay:

CH3 Button works during this interval, when CH3 Edge Trigger is checked.

Dead Zone of Pressure sensitive Button:

Proportional input below this value is ignored as pressure sensitive button.

5. Factory Reset

Connect USB or PS2 while the Setup/Mode Button is pressed.

6. Trouble Shooting

- ① RC controller does not respond in play of the game.
 - Try the motion range setup again.(3-3)
 - Check if RC controller respond in JoyCon Explorer of PC.
 - Only USB works when both PS2 and USB is connected.

7. Warning

- Do not connect battery at RC receiver connector of RcJoyCon powers RC receiver. Use only as user guide.
- Do not connect reverse connector of RcJoyCon powers RC receiver.
- Do not disassemble.
- To reduce noise, install the antenna of RC Controller as short as possible.
- Indoor use only.

8. Warrants and A/S

RcJoyMall repairs the faults of our product for free. If the fault occurs due to the mistake and misconduct of a consumer, RcJoyMall carries out the repair at the cost of the consumer. The delivery fee should be paid by the consumer in the case of A/S. Carefully packing the product in the box in order to minimize vibration in the process of delivery, please send the product for repair to the address below.

Address : (152-833) 3F 252-37 GoChuk2-Dong Guro-Gu
Seoul Korea, RcJoyMall
Home page : www.RcJoyCon.com
Tel : 82-2-2619-0594

26th. OCT. 2009

