

Knowledge Note KN1051

CarPC JoyCon Exd/Exr

Launch Button and Close Button

JoyCon Explorer version later than 130614 is required to use Launch Button and Close Button option.

The application that is associated with a preset can be launched when the preset is switched by Preset up/down button.

But some applications need to be launched only when it is needed.

For example, TV do not need to be launched every time the preset is switched.

You can launch an application when it is needed with Launch Button and Close Button option.

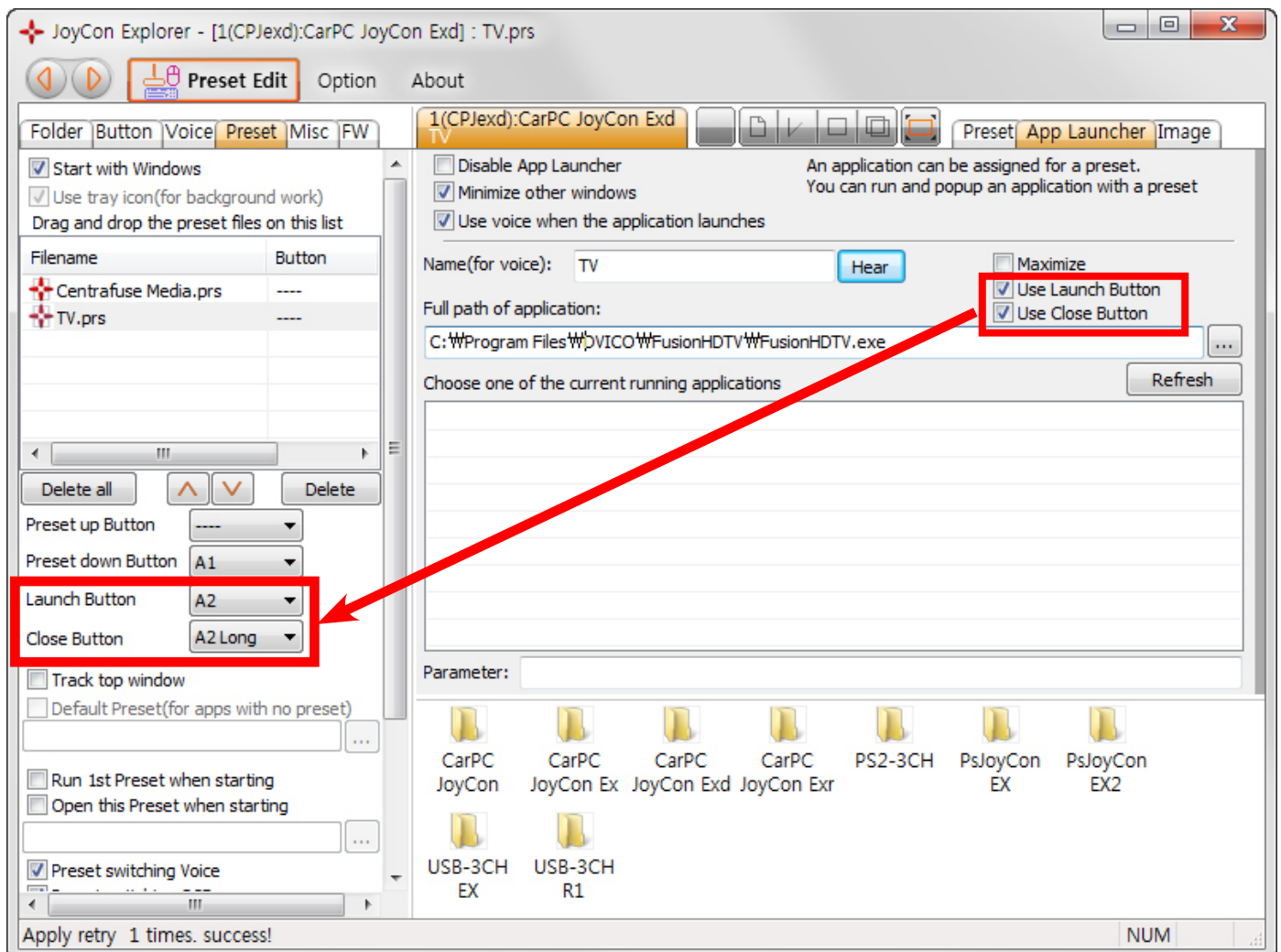
If an application of a preset is need to be launched by a **Launch Button**, check **Use Launch Button**.

If an application of a preset is need to be closed by a **Close Button**, check **Use Close Button**.

Launch Button and Close Button can be assigned to a button in the Preset tab.

Use Launch Button and Use Close Button option is applied to each preset, not all the presets.

In the preset without Use Launch Button or Use Close Button option, Launch Button or Use Close Button is ignored.



For example, in the screen shot below:

When the A1 button is pressed, the presets are switched.

With the preset, Centrafuse Media.prs being switched, Centrafuse is always launched if it is not launched yet.

With the preset, TV.prs being switched, TV is launched only when the A2 button(which is assigned to Launch Button)is pressed. And TV is closed when the A2 Long button is pressed.

